



Engineering . Industry, transport of Energy, Connections

Mastering high currents

ITEC.BAR™

PRODUCT DATA
SHEET

P26A

ITEC.BAR™ GV

HVA CAST RESIN BUS DUCTS

Easy routing through the possibilities of bending tubes in all directions.
Space-saving and safety benefits thanks to high insulation power of the resin.
Rated voltage till 36 kV.



General characteristics

Tubular bus ducts (ISPB) delivered ready-to-install, with personalized design, technical data sheet, drawings, installation and maintenance notice.

Layout especially designed for each project.

Tubular conductors in electrolytic Cu-ETP for ITEC.BAR™ GVC, **or in aluminium 1050** for ITEC.BAR™ GVA. The use of tubular conductors allows to limit the influence of the skin effect.

Homogeneous distribution of the electric field.

Insulation by cast polyurethan resin specific to our HVA bus duct.

Discharge of electrical charges through a grounded concentric conductive layer included in the resin (according to the rated voltage).

UV and atmospheric protective ringed sheath in modified polyamide 12

Touchsafe protection.

High dynamic and thermic short-circuit withstand.

No maintenance.

Flexible ends in braids or insulated laminated bars in copper or aluminium, for a quick, easy and secure connection to the devices.

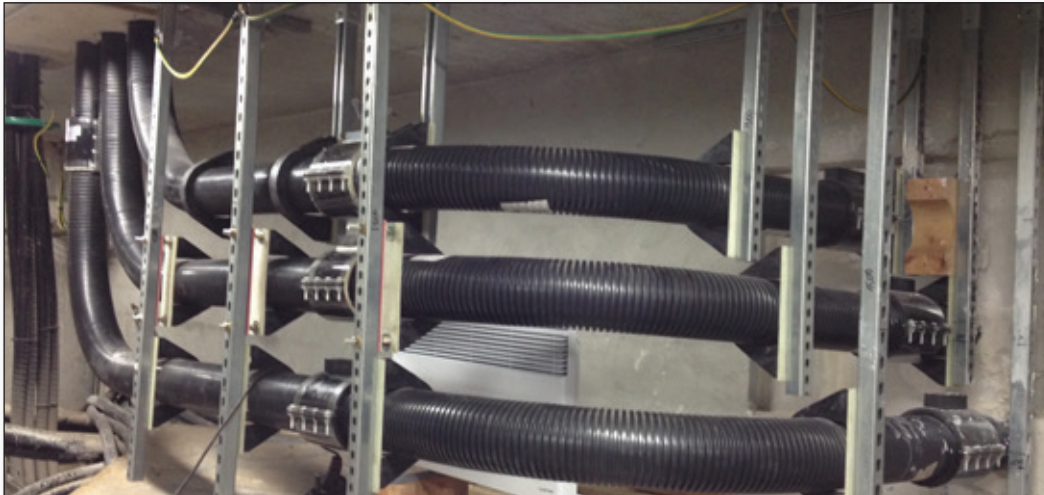
Adjustable system of supports by specific clamps mounted on a steel or non-metallic slide (according to voltage).

Adaptation to specific conditions of the plant: climate, temperature, particular constraints, fire-breaking, etc.

Compliance with current IEC standards.

ITEC.BAR™ GV HVA CAST RESIN BUS DUCTS

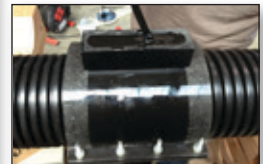
Three-phase bus duct with adjustable support system



Sectional view of the bus duct



Casting of a joint



ITEC.BAR™ GV range:

Conductors in copper Cu-ETP				Thermoplastic ringed sheath		Conductors in aluminium Al99,5				Thermoplastic ringed sheath	
I (A)	Ø Int (mm)	Ø Ext (mm)	S (mm ²)	Ø Int	Ø Ext	I (A)	Ø Int (mm)	Ø Ext (mm)	S (mm ²)	Ø Int	Ø Ext
1250	20	40	940	56,3	67,2	1000	20	40	940	56,3	67,2
1600	/	40	1260	56,3	67,2	1250	/	40	1260	56,3	67,2
2000	40	60	1570	91,3	106	1600	40	60	1570	91,3	106
2500	30	60	2120	91,3	106	2000	30	60	2120	91,3	106
3150	80	100	2830	126,5	146,5	2500	80	100	2830	126,5	146,5
4000	70	100	4000	126,5	146,5	3150	70	100	4000	126,5	146,5

Nota: short-circuit withstand are adapted to each project.

Operating conditions, except amending notifying:

- Altitude lower than 2000 metres
- Average ambient air temperature over 24 hours: 35°C, maximum 40°C for 2 hours
- Relative humidity from 0 to 100% at 20°C
- Alternative current, frequency 50 / 60 Hz
- Rated voltage from 1 kV to 36 kV.

**OTHER INTENSITIES OR CONFIGURATIONS
MAY BE SUPPLIED ON REQUEST**